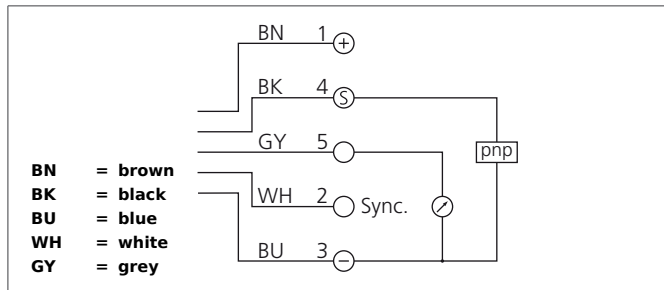


USC 30 M 6000 IO/10PSK-BSL

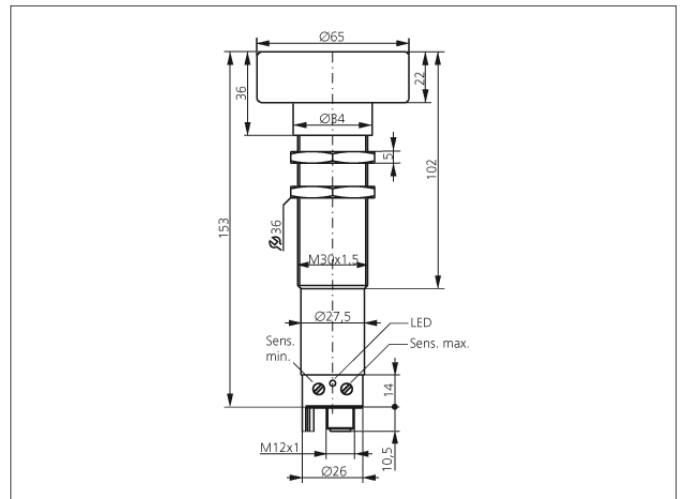
Ultrasonic Sensor

- Integrated temperature compensation
- Operating mode ultrasonic diffuser or ultrasonic barrier settable via PC sensor interface (not included)
- Switching output and analog output
- Synchronisation/release input
- Scanning range adjustable via potentiometer or PC sensor interface
- Insensitive to dirt and ambient noise
- Metal casing
- High protection class



Safety instructions

The Instruments are not to be used for safety applications, in particular applications in which safety of persons depends on proper operation of the instruments.
These instruments shall exclusively be used by qualified personnel.



| TECHNICAL INFORMATION (typ.) | +20°C, 24V DC |
|------------------------------|---------------------------------------|
| Operating principle | Ultrasonic sensor, Ultrasonic barrier |
| Evaluation | digital, analog |
| Size | M30 x 1,5 (thread) |
| Design | screw |
| Standardized measuring plate | 100 x 100 mm |
| Service voltage | 12 ... 30 V DC |
| Internal power consumption | < 60 mA |
| Operating distance | 600 ... 6.000 mm |
| Adjustment range | 640 ... 6.000 mm |
| Sensitivity adjustment | potentiometer |
| Switching output | pnp, 300 mA, NO + analog |
| Switching hysteresis | 60 mm |
| Analog output | 0 ... 10 V, Load / < 2000 Ω |
| Operating frequency | 80.000 Hz |
| Switching frequency | < 1 Hz |
| Accuracy | 1,5 % |
| Response-/release time | 0,4 s |
| Reproducibility | 9 mm |
| Ambient temperature | -25 ... +70 °C |
| Insulation voltage endurance | 500 V |
| Protection class | IP 65 |
| Casing material | brass nickel plated |

USC 30 M 6000 IO/10PSK-BSL

Ultrasonic Sensor



TECHNICAL INFORMATION (typ.)

+20°C, 24V DC

Material

PBTP (Crastin) (Transducer enclosure)
epoxy resin (Transducer surface)

Connection

Connector, M12, 5-poled